

Henna Every Day Patchwork Bag

A lightly padded bag with shoulder strap suitable for every day use.
Designed by Janet Goddard www.patchworkpatterns.co.uk
Finished Size 12" x 12" x 3 1/2" (30cm x 30cm x 9cm) excluding handle



makower uk

Unit 14, Cordwallis Business Park, Clivemont Road, Maidenhead, Berkshire SL6 7BU
+44(0)1628 509640 sales@makoweruk.com www.makoweruk.com

Henna Every Day Patchwork Bag

A lightly padded bag with shoulder strap suitable for every day use.

Designed by Janet Goddard www.patchworkpatterns.co.uk

Finished Size 12" x 12" x 3 1/2" (30cm x 30cm x 9cm) excluding handle

Fabric Requirements:

Fabric	Useage	Design	Amount
Fabric One	Patchwork	2392/TY	25cms (10")
Fabric Two	Patchwork	2396/Y	25cms (10")
Fabric Three	Outer Bag base	2397/P	Fat 1/4
Fabric Four	Lining and inside pocket	2393/P	50cms (20")
Fabric Five	Strap loops and strap	2394/P	20cms (8")
Other; 50cms (20") fusible wadding, Two 2.5cm (1") squares of iron on interfacing, 1 magnetic snap two 3.1cm (1 1/4") D rings			

Notes;

- Read the pattern in full before starting.
- 1/4" seams are used throughout.
- All fabrics quantities are cut width of fabric (WOF) and allow for one way designs
- Make sure to visit <http://www.makoweruk.com/projects/> to ensure you are working from the most up-to-date version of the pattern.

Cutting Instructions:

Fabric One:

Cut six (4 1/2") squares

Fabric Two:

Cut six (4 1/2") squares

Fabric Three:

Cut two (12 1/2" x 6 1/2") rectangles

Fabric Four:

Cut two (12 1/2" x 14") rectangle

Cut one (5 1/2" x 8") rectangle

Fabric Five

Cut one (3 1/4" x 32") strip

Cut one (3" x 13") strip

Wadding:

Cut one (12 1/2" x 28 1/2") rectangle

Cut one (1" x 32") strip

Sewing Instructions:

To Stitch the Outer Bag:

1. Stitch the 4 1/2" squares of fabrics one and two into four rows of three squares each, alternating the fabrics. Stitch the rows together to make two units of six squares. Press all seams in alternate directions.
2. Stitch both fabric three rectangles together along one of the 12 1/2" edges, ensuring that directional patterns face away from the seam line. Stitch each of the units completed in step one to opposite sides of this fabric three square.. Press seams towards fabric three.
3. Iron the (12 1/2" x 28 1/2") rectangle of fusible wadding to the reverse of the outer bag unit completed in step two.
4. Quilt diagonal lines spaced at 2" intervals across the outer bag.

5. Fold the outer bag up so that the patchwork squares are on top of each other, right sides facing, and stitch down each side.
6. To shape the base of the bag, match the centre seam of the base with each side seam. Measure in 1 ½" along the seam line from the outer point. Pin and draw a line with a marking pencil from edge to edge horizontally. Stitch on this line and then trim off excess fabric. Turn the bag right side out.

To Stitch the Strap and Strap Loops:

7. To stitch the strap loops take the (3" x 13") strip of fabric five and press under ¼" on each long edge. Fold in half so that the right side of the fabric is facing out and top stitch down the folded edge. Top stitch down the opposite edge also. Cut the strip in half to make two loops.
8. Insert each strap loop into a D ring. Fold the loop in half, making sure that the raw edges are even. Stitch across the fabric ¼" away from the D ring.
9. Pin a strap loop to each side of the outer bag, right sides facing, placing a loop over the centre of each side seam. Tack in place.
10. To stitch the strap take the (3 ¼" x 32") strip of fabric five and press under ¼" on one long edge. Lay the (1" x 32") strip of fusible wadding down the centre of wrong side of the strap and iron in place.
11. Fold the raw edge of the fabric to the centre of the wadding and then the folded edge on top. The folded edge should overlap the raw edge. Pin in place. Top stitch down the folded edge. Top stitch another five lines of stitching along the strap. Put the strap to one side.

To Stitch the Lining:

12. To stitch the pocket take the (5 ½" x 8 ½") rectangle of fabric four and fold in half, right sides together so that the top edge measures 4 ¼". Stitch around the three raw edges, leaving a 2" opening. Trim corners, turn through and press.
13. Take one of the (12 ½" x 14") rectangles of fabric four and position the pocket 2 ½" from one of the 12 ½" edges, right side facing. Top stitch down each side and across the bottom leaving the top edge open.
14. To insert the magnetic snap measure 1" down from each 12 ½" edge and 6 ¼" in from each side of the lining rectangles (ensuring that if you are using a directional print that it is correctly orientated) and mark the point with a dot. Iron the 1" squares of interfacing to the wrong side of the lining over the marked dots. Make two small holes for the prongs of the magnetic snap. Inset the prongs through the holes, add the back plates and open the prongs so that they lie flat.
15. Place the lining rectangles together so that the right sides are facing and the 12 ½" raw edges are at the top together. Stitch down each side and across the bottom, leaving a 4" gap in one side for turning.
16. To shape the base of the lining in the same way as the outer bag follow the instructions in step six.

To Stitch the Bag Together:

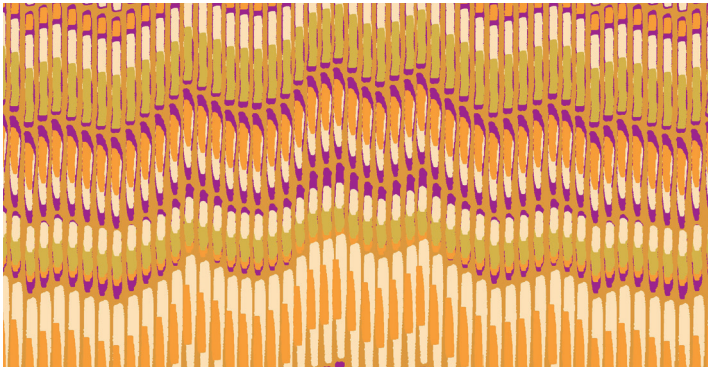
17. Place the outer bag inside the lining so that the right sides of the fabric are facing. Matching the side seams stitch around the top edge of the bag. Turn through the opening and stitch the lining closed.
18. Carefully press the top of the bag so that the lining matches the top edge of the outer bag and top stitch around the edge.
19. To add the strap, thread the ends through the D rings on the strap loops. Fold under the raw edge on each end of the strap and stitch it back on itself 1 ½" up from the ring. Stitch across the strap several times for extra strength with a double row of stitching.
20. Enjoy using your bag!



2390/T

Henna

"New Henna is a revisitation of my popular first collection. It has been a fun opportunity to rework some of my favourite prints from the last few years and build them into something new. The main 'Henna' design is largely unchanged, but with the addition of dusky yellow and purple shades to the palette. It has been great fun playing with unexplored colourways and designs, that have not been previously used together, to create a new collection. This is something I always love to do when dipping into my stash of all my old fabrics." For further info visit lovefrombeth.com



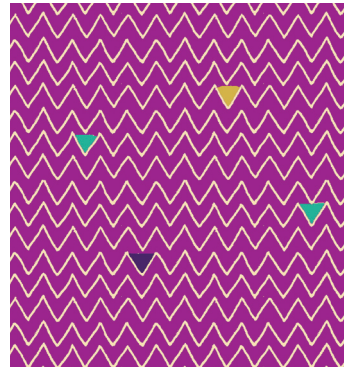
2397/Y

Moire Stripe



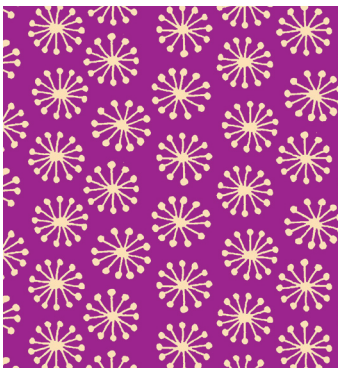
2391/L

Dash Flower



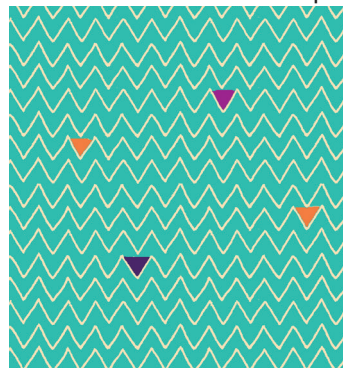
2396/P

Zig-Zag



2393/P

Pop



2396/T

Zig-Zag



2394/Y

Star



2393/L

Pop



2392/YP

Sunflower



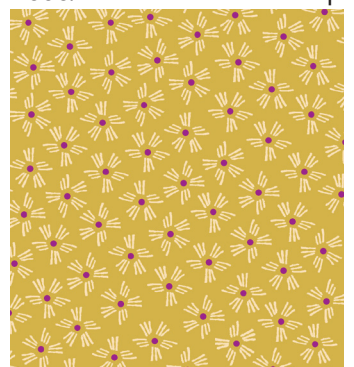
2394/L

Star



2395/P

Medallion



2391/Y

Dash Flower



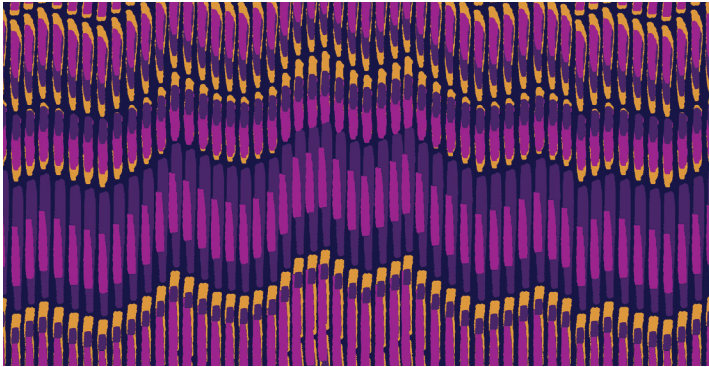
2390/Y

Henna



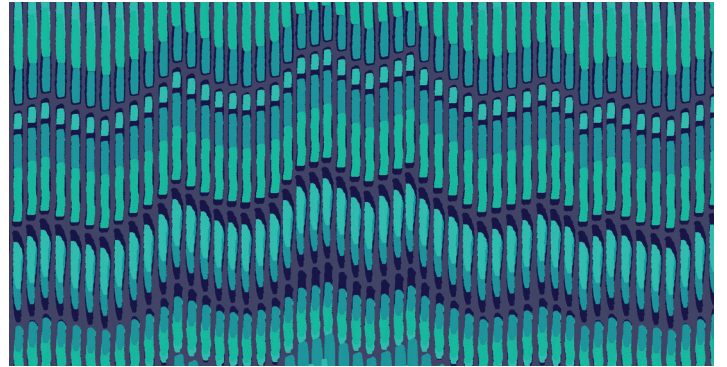
2390/L

Henna



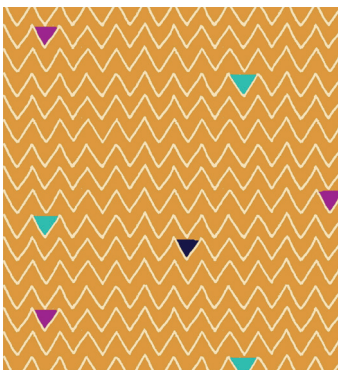
2397/P

Moire Stripe



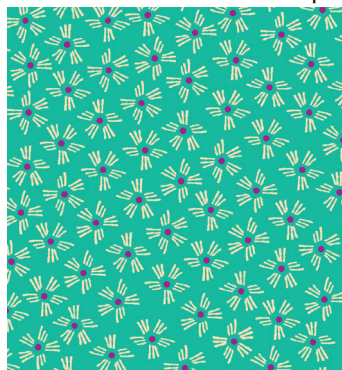
2397/T

Moire Stripe



2396/Y

Zig-Zag



2391/T

Dash Flower



2393/N

Pop



2394/P

Star



2392/TY

Sunflower



2395/L

Medallion



2392/TL

Sunflower



2395/T

Medallion